

# Cynomolgus GDF15 Protein

Cat. No. GDF-CM215



## Description

<b>Source</b>	Recombinant Cynomolgus GDF15 Protein is expressed from HEK293 with hFc tag at the N-Terminus. It contains Ala197-Val308.
<b>Accession</b>	G7PWZ3
<b>Molecular Weight</b>	The protein has a predicted MW of 37.9 kDa. Due to glycosylation, the protein migrates to 40-50 kDa based on Bis-Tris PAGE result.
<b>Endotoxin</b>	Less than 1EU per µg by the LAL method.
<b>Purity</b>	> 95% as determined by Bis-Tris PAGE > 95% as determined by HPLC

## Formulation and Storage

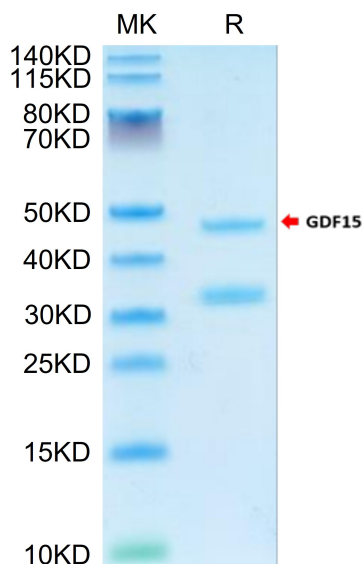
<b>Formulation</b>	Lyophilized from 0.22µm filtered solution in PBS (pH 7.4). Normally 8% trehalose is added as protectant before lyophilization.
<b>Reconstitution</b>	Centrifuge the tube before opening. Reconstituting to a concentration more than 100 µg/ml is recommended. Dissolve the lyophilized protein in distilled water.
<b>Storage</b>	-20 to -80°C for 12 months as supplied from date of receipt. -80°C for 3 months after reconstitution. Recommend to aliquot the protein into smaller quantities for optimal storage. Please minimize freeze-thaw cycles.

## Background

Growth and differentiation factor 15 (GDF15) is an inflammation-associated hormone with poorly defined biology. Here, we investigated the role of GDF15 in bacterial and viral infections. Inflammation induced GDF15, and that GDF15 was necessary for surviving both bacterial and viral infections, as well as sepsis. The protective effects of GDF15 were largely independent of pathogen control or the magnitude of inflammatory response, suggesting a role in disease tolerance.

## Assay Data

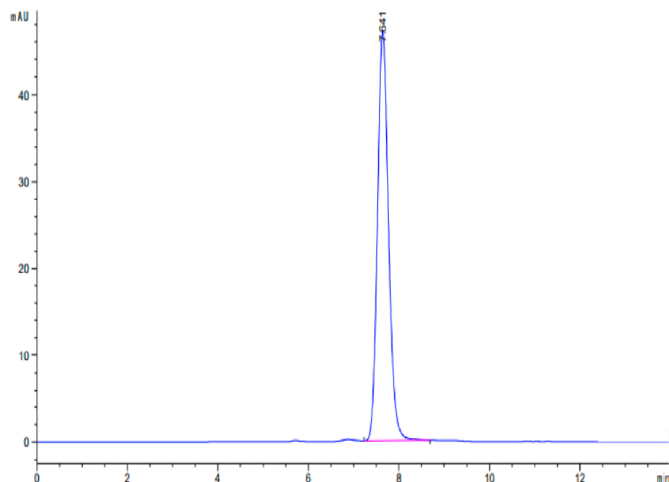
### Bis-Tris PAGE



Cynomolgus GDF15 on Bis-Tris PAGE under reduced condition. The purity is greater than 95%.

### SEC-HPLC

Assay Data

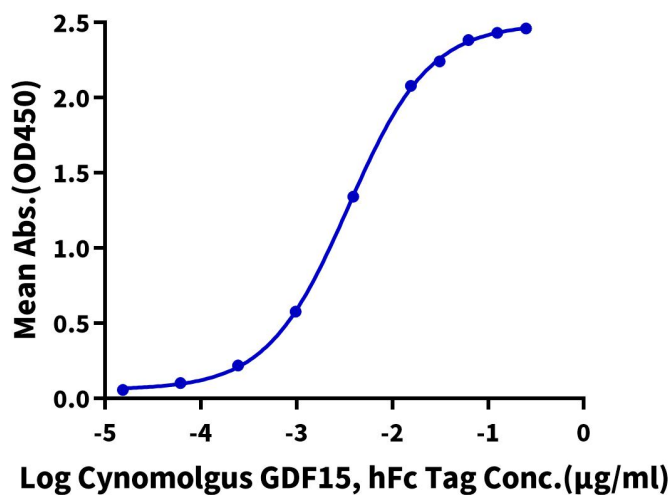


The purity of Cynomolgus GDF15 is greater than 95% as determined by SEC-HPLC.

ELISA Data

**Cynomolgus GDF15, hFc Tag ELISA**

0.1µg Cynomolgus GFRAL, His Tag Per Well



Immobilized Cynomolgus GFRAL, His Tag at 1µg/ml (100µl/well) on the plate. Dose response curve for Cynomolgus GDF15, hFc Tag with the EC50 of 3.5ng/ml determined by ELISA.